

## TWS-4□□□(1)

### ■ SPECIFICATIONS

- 3-Phase,3-Wire method
- High performance under small leakage current
- Efficient performance under motor noise
- High filterings by double filters
- Excellent Filtering for Normal Mode and Common Mode Noise
- Easy installation and easy maintenance
- Protection plastic covers optionally available for unsurpassed safety



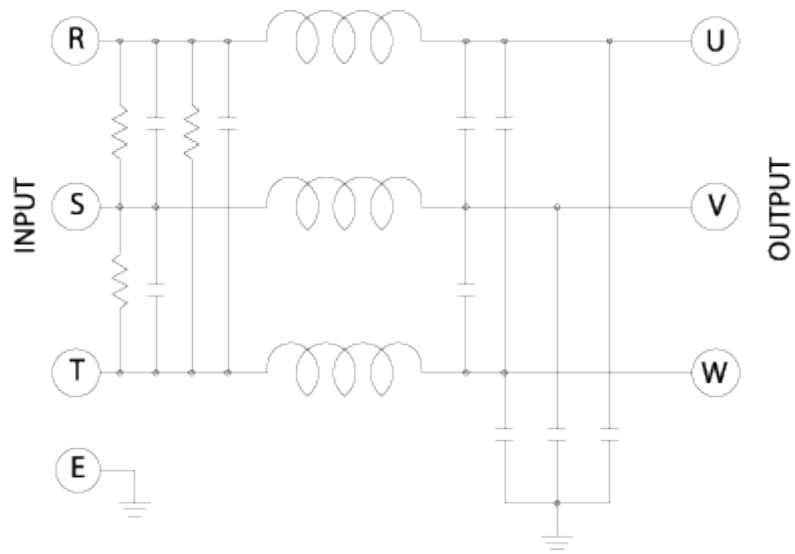
### ■ APPLICATIONS

- General purpose, Inverter.
- FA and OA Equipments
- Personal Computer and peripherals.
- Digital and Measuring Equipments
- Communication Equipments

### ■ SPECIFICATIONS

MODEL	TWS - 4010	TWS - 4020	TWS - 4030	TWS - 4040
RATED CURRENT	10A	20A	30A	40A
RATED VOLTAGE	450 VAC			
TEST VOLTAGE	2,000V 10mA between I/O terminals - case for 1 minute			
INSULATION RESISTANCE	500VDC 300Mohm between I/O terminals - case			
LEAKAGE CURRENT	1 mA Max			
TEMPERATURE RISE	40°C Max			
OPERATING TEMPERATURE	-25 ~ +85°C			

### ■ Block Diagram



**■ Dimensions (Units:mm)**

