

## TWS-2□□□(3)

### ■ SPECIFICATIONS

- 3-Phase,3-Wire method
- High performance under small leakage current
- Efficient performance under motor noise
- High filterings by double filters
- Excellent Filtering for Normal Mode and Common Mode Noise
- Easy installation and easy maintenance
- Protection plastic covers optionally available for unsurpassed safety



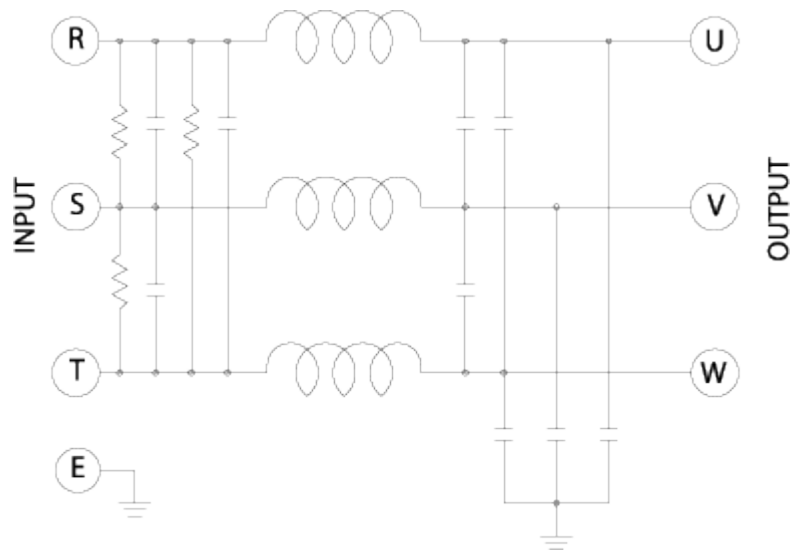
### ■ APPLICATIONS

- Industrial and Medical Equipments.
- FA and OA Equipments
- Personal Computer and peripherals.
- Digital and Measuring Equipments
- Communication Equipments

### ■ SPECIFICATIONS

MODEL	TWS - 2080	TWS - 2100	TWS - 2120	TWS - 2150
RATED CURRENT	80A	100A	120A	150A
RATED VOLTAGE	250 VAC			
TEST VOLTAGE	2,000V 10mA between I/O terminals - case for 1 minute			
INSULATION RESISTANCE	500VDC 300Mohm between I/O terminals - case			
LEAKAGE CURRENT	1 mA Max			
TEMPERATURE RISE	40°C Max			
OPERATING TEMPERATURE	-25 ~ +85°C			

### ■ Block Diagram



■ Dimensions (Units:mm)

