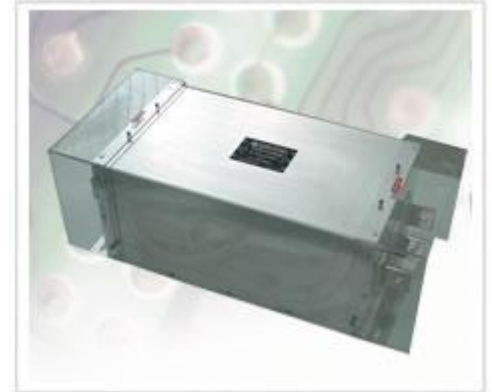


TWS-2□□□(6)

■ SPECIFICATIONS

- 3-Phase,3-Wire method
- High performance under small leakage current
- Efficient performance under motor noise
- High filterings by double filters
- Excellent Filtering for Normal Mode and Common Mode Noise
- Bus bars for convenient
- Protection plastic covers optionally available for unsurpassed safety



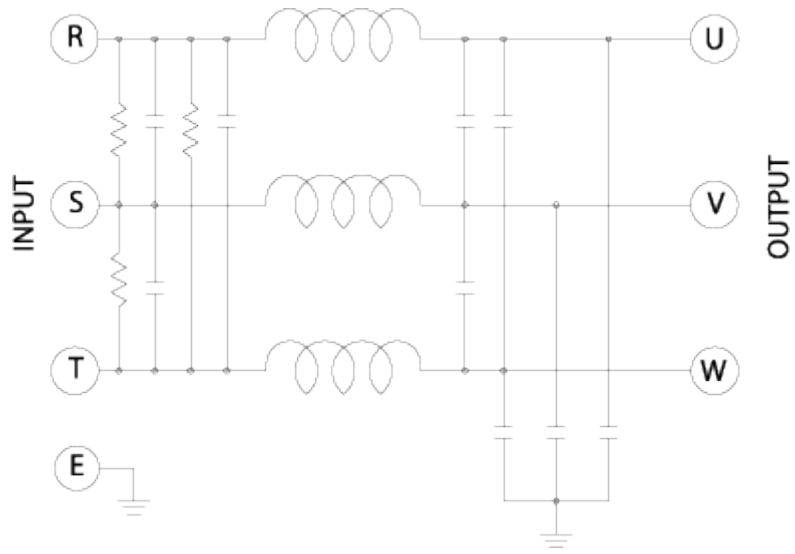
■ APPLICATIONS

- Industrial and Medical Equipments.
- FA and OA Equipments
- Personal Computer and peripherals.
- Digital and Measuring Equipments
- Communication Equipments

■ SPECIFICATIONS

MODEL	TWS - 2660	TWS - 2750	TWS - 2880	TWS - 210AB
RATED CURRENT	660A	750A	880A	1000A
RATED VOLTAGE	250 VAC			
TEST VOLTAGE	2,000V 10mA between I/O terminals - case for 1 minute			
INSULATION RESISTANCE	500VDC 300Mohm between I/O terminals - case			
LEAKAGE CURRENT	1 mA Max			
TEMPERATURE RISE	40°C Max			
OPERATING TEMPERATURE	-25 ~ +85°C			

■ Block Diagram



■ Dimensions (Units:mm)

