

TWT-RC □ □ -450(8)

■ SPECIFICATIONS

- 3-Phase,3-Wire method
- High performance under small leakage current
- Efficient performance under motor noise
- High filterings by double filters
- Excellent Filtering for Normal Mode and Common Mode Noise
- Surge intercept

■ APPLICATIONS

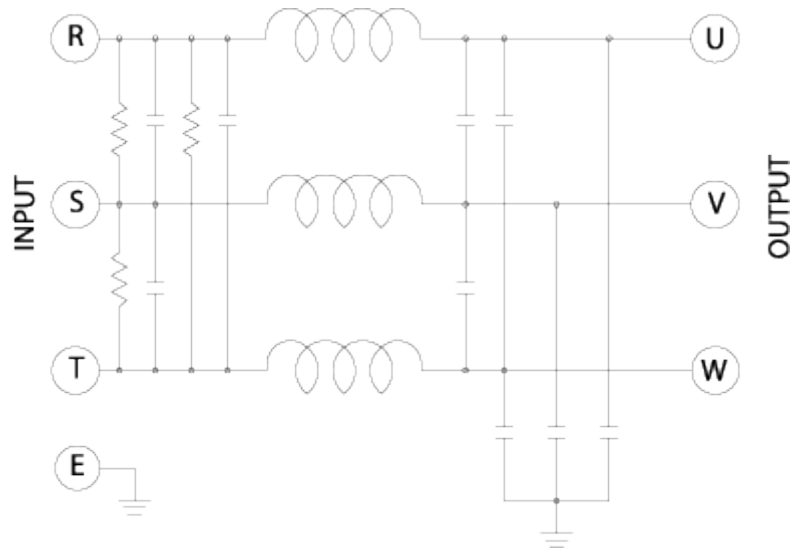
- Inverter System, Aircons
- FA and OA Equipments
- Personal Computer and peripherals.
- Digital and Measuring Equipments
- Communication Equipments
- Inverter



■ SPECIFICATIONS

MODEL	TWT - RC220F	TWT - RC330F
RATED CURRENT	20 A	30 A
RATED VOLTAGE	450 VAC	
TEST VOLTAGE	1,500V 10mA between I/O terminals and Earth for 1 minute	
INSULATION VOLTAGE	500VDC 300Mohm between I/O terminals and Earth	
LEAKAGE CURRENT	2 mA Max	
TEMPERATURE RISE	40°C Max	
OPERATING TEMPERATURE	-25 ~ +85°C	

■ Block Diagram



Dimensions (Units:mm)

