

## TWT-RC□□-450(4)

### ■SPECIFICATIONS

- 3-Phase,3-Wire method
- High performance under small leakage current
- Efficient performance under motor noise
- High filterings by double filters
- Excellent Filtering for Normal Mode and Common Mode Noise



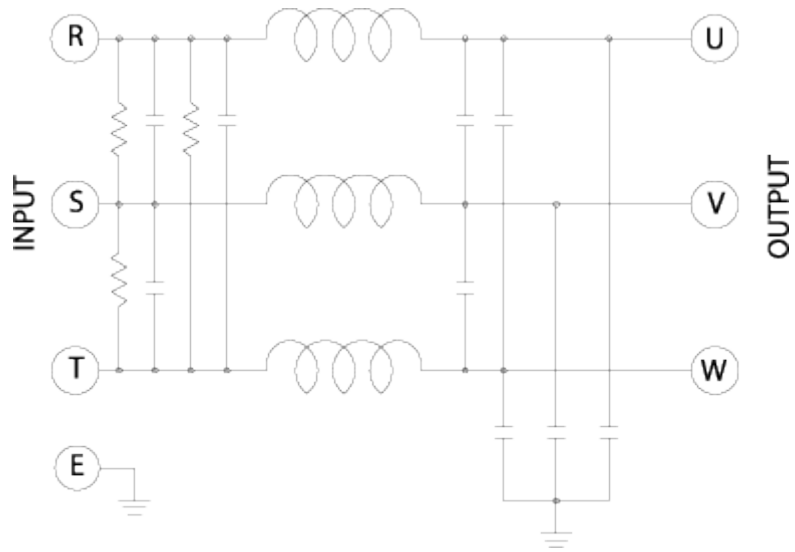
### ■APPLICATIONS

- General Purpose, Inverter
- FA and OA Equipments
- Personal Computer and peripherals.
- Digital and Measuring Equipments
- Communication Equipments

### ■SPECIFICATIONS

MODEL	TWT - RC150 - 450	TWT - RC200 - 450
RATED CURRENT	150A	200A
RATED VOLTAGE	450 VAC	
TEST VOLTAGE	1,500V 10mA between I/O terminals and Earth for 1 minute	
INSULATION VOLTAGE	500VDC 300Mohm between I/O terminals and Earth	
LEAKAGE CURRENT	2 mA Max	
TEMPERATURE RISE	40°C Max	
OPERATING TEMPERATURE	-25 ~ +85°C	

### ■Block Diagram



**■ Dimensions (Units:mm)**

