

WT-RC□□-L

SPECIFICATIONS

- Excellent Filtering
- LID Wire
- economically most usings
- Confidency by Epoxy Coverage

APPLICATIONS

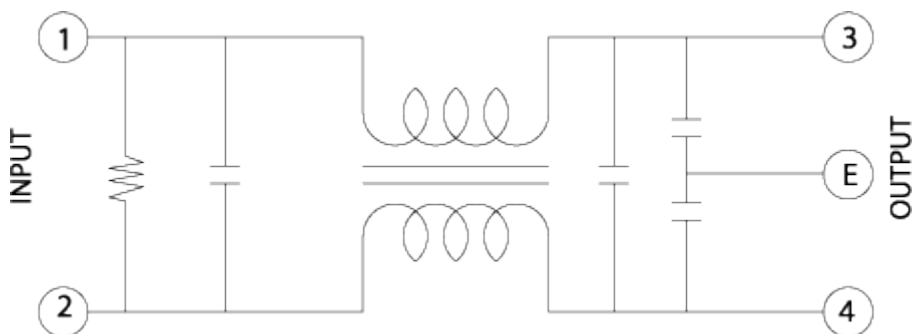
- Digital Equipments
- Personal Computer and peripherals
- Measuring and Medical Equipments
- Commumication Equipments
- Industrial Equipments



SPECIFICATIONS

MODEL	WT-RC02-L	WT-RC03-L	WT-RC06-L
RATED CURRENT	2A	3A	6A
RATED VOLTAGE	250 VAC		
TEST VOLTAGE	1,500V 10mA between I/O terminals and Earth for 1 minute		
INSULATION VOLTAGE	500VDC 300Mohm between I/O terminals and case		
LEAKAGE CURRENT	0.5mA Max		
TEMPERATURE RISE	30°C Max		
OPERATING TEMPERATURE	-25 ~ +85°C		

Block Diagram



Dimensions (Units:mm)

